



1922—2022  
中国地质学会

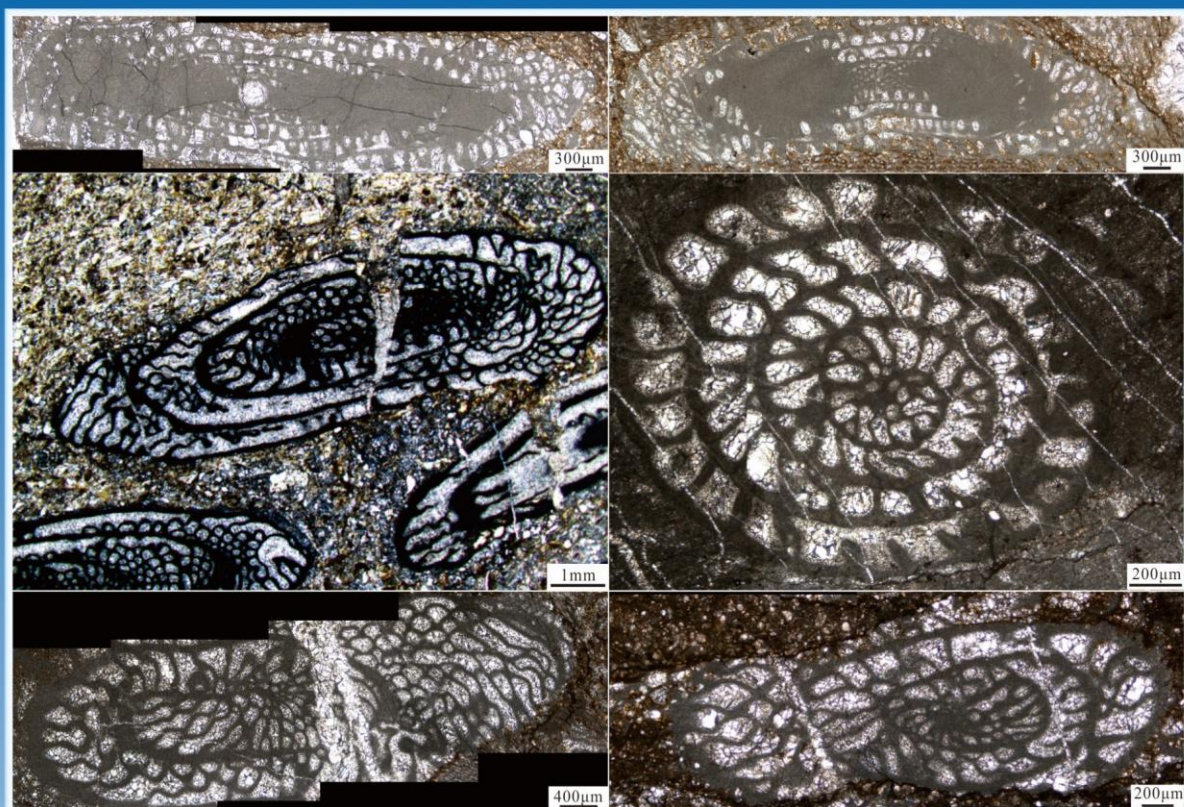
ISSN 1009-6248  
CN 61-1149/P

# 西北地质

## NORTHWESTERN GEOLOGY

# 2022

第55卷第2期  
Vol. 55 No.2



主管 中国地质调查局  
主办 中国地质调查局西安地质调查中心  
中国地质学会  
2022年6月出版

科学出版社

# 目 次

## 第二次青藏高原科考与关键矿产专栏

西昆仑玛尔坎苏地区穆呼锰矿含锰岩系沉积环境——来自蜓类化石及碳酸盐岩碳、氧、锶同位素证据  
..... 陈登辉,隋清霖,郭周平,赵晓健,滕家欣,高永宝( 1 )

中国钴-镍成矿规律与高效勘查技术..... 张照伟,李文渊,丰成友,王辉,王亚磊,武军杰,李德贤,吕新彪,朱伯鹏,惠博,刘会文( 14 )

LCT 型花岗岩伟晶岩岩石成因和锂富集机制研究进展 ..... 孙文礼,刘益,张照伟( 35 )

## 新技术新方法专栏

新型对地观测技术与地球健康体检 ..... 李志忠,卫征,陈霄燕,王建华,刘拓,孙萍萍,韩海辉,李文明,赵君,贾俊( 56 )

一种快速识别基性-超基性岩的新方法——基性度遥感指数法..... 韩海辉,张转,任广利,易欢,刘拓( 71 )

新型三维地质建模方法及其在成都-昌都区域建模的应用 ... 马朝阳,王占昌,张立海,姚聿涛,乔亚凯( 82 )

柴达木西北缘大通沟南山北闪长岩年代学、地球化学特征及其地质意义..... 刘军,息朝庄,黄波,杨涛,夏浩东,邓会娟( 93 )

西秦岭北缘漳县渐新统一中新统湖相碳酸盐岩碳、氧同位素特征及意义..... 杨晓璇,李雪峰,郭进京,赵海涛( 106 )

南襄盆地地质结构与形成演化 ..... 李智,张志业,李双建,熊健,安艳君( 116 )

米仓山地层小区(西段)层序地层及沉积相分析 ..... 吴新斌,李岩,毛友亮( 128 )

东濮凹陷文 33 断块沙二下亚段浅水三角洲沉积特征..... 尹楠鑫,罗超,吴斌,代洁,陈岑,罗波波,范人杰,李乐乐( 135 )

苏里格气田奥陶系马家沟组马五段碳酸盐岩(准)同生期岩溶作用特征 ... 田清华,刘俊,李浮萍,黄丹( 146 )

新疆车排子油田车探 1 井 3 538~3 774 m 井段孢粉组合及地质意义 ..... 张誉洋,李永军,郑孟林,段丰浩,徐倩,郭文建,余海涛,任海蛟,王韬( 157 )

甘肃省天水市活动断裂带主要特征及活动性分析 ..... 温志亮,曾庆铭,田中英,刘江,张新社,孟晓捷,牛千,孙少珍( 166 )

红土型金矿地质特征、控矿因素及找矿标志..... 庄天明,李小飞,王新彦( 176 )

新疆三塘湖盆地牛圈湖地区盖层特征及砂岩型铀成矿条件分析 ..... 郑国栋,罗强,黄国龙,唐湘飞,吴建勇,韦昌鑫( 185 )

白家海地区下侏罗统三工河组高分辨层序地层格架内岩性油气藏研究 ..... 于景维,张庆伟,祁利祺,于美琪,张晓童,潘凤超,褚旭( 199 )

河南省栾川县杨山萤石矿成矿作用:来自氢氧同位素和元素地球化学的约束..... 张苏坤,王辉,冯绍平,刘耀文,李想,陈柯颖,黄岚,张怡静( 209 )

“西安绿”玉石的宝石矿物学特征研究 ..... 赵慧博,同彦庄,刘芳晓,赵娟,魏小燕,刘三,周宁超( 217 )

利用环境同位素识别共和盆地地下水补给特征及其环境指示意义 ..... 刘春雷,杨会峰,曹文庚( 227 )

“灰岩天窗”对济南泉水水化学组分的影响..... 武羽晓,邢立亭,袁春鸿,吕晶( 237 )

基于加权信息量法的黄土滑坡易发性评价——以 1:5 万天水市麦积幅为例..... 孟晓捷,张新社,曾庆铭,王冬( 249 )

基于 BP 神经网络的区域滑坡易发性评价 ..... 张林梵,王佳运,张茂省,陈社斌,王涛( 260 )

元素等量浓集概念及其应用——以陕西宁强县中坝矿区土壤测量异常解释为例 ..... 王占彬,马承,杨可,张晓星,刘基,寇少磊,田渊( 271 )

安徽石台地区富硒土壤分布及硒的富集迁移规律探讨..... 高雅,胡晨,张春雷,查世新( 284 )

汉阴县凤堰水田区土壤硒含量特征及影响因素 ..... 陈继平,罗婷,李傲瑞,王晖,赵飞飞( 292 )

基于高斯混合聚类算法的西安市人工填土空间分布研究..... 刘梁,石卫,张晓平,韩冰,董欣,袁琳( 298 )

《西北地质》在《WJCI 报告》中攀升到 Q2 分区 ..... ( 297 )

西昆仑玛尔坎苏地区蜓类化石 ..... 陈登辉(封面)

## CHIEF CONTENTS

Sedimentary Environment of Mn-bearing Carbonate from the Muhu Manganese Deposit in Malkansu, West Kunlun; Evidences from Fusulinids and C-O-Sr Isotopes ..... CHEN Denghui, SUI Qinglin, GUO Zhouping, ZHAO Xiaojian, TEN Jiaxin, GAO Yongbao ( 1 )

Study on Metallogenic Regularity of Co-Ni Deposits in China and Its Efficient Exploration Techniques ..... ZHANG Zhaowei, LI Wenyuan, FENG Chengyou, WANG Hui, WANG Yalei, WU Junjie, LI Dexian, LÜ Xinbiao, ZHU Bopeng, HUI Bo, LIU Huiwen ( 14 )

Research Progression Petrogenesis of LCT-type Granitic Pegmatite and Lithium Enrichment Mechanism ..... SUN Wenli, LIU Yi, ZHANG Zhaowei ( 35 )

New Earth Observation Technology and Earth Health Examination ..... LI Zhizhong, WEI Zheng, CHEN Xiaoyan, WANG Jianhua, LIU Tuo, SUN Pingping, HAN Haihui, LI Wenming, ZHAO Jun, JIA Jun ( 56 )

A New Method for Fast Identification of Basic-ultrabasic Rocks—Basic Degree Index from Remote Sensing Image ..... HAN Haihui, ZHANG Zhuan, REN Guangli, YI Huan, LIU Tuo ( 71 )

A New 3D Geological Modeling Method and Its Application in Chengdu-Changdu Region Modeling ..... MA Zhaoyang, WANG Zhanchang, ZHANG Lihai, YAO Yutao, QIAO Yakai ( 82 )

Geochronology, Geochemistry and Geological Significance of the Diorite in Datonggou Nanshanbei, Northwestern Qaidam Basin ..... LIU Jun, XI Chaozhuang, HUANG Bo, YANG Tao, XIA Haodong, DENG Huijun ( 93 )

Characteristics and Significance of C-O Isotopes of Oligocene Miocene Lacustrine Carbonate Rocks in Zhangxian, Northern Margin of West Qinling Mountains ..... YANG Xiaoxuan, LI Xuefeng, GUO Jinjing, ZHAO Haitao ( 106 )

Geologic Architecture and Tectonic Evolution of Nanxiang Basin ..... LI Zhi, ZHANG Zhiye, LI Shuangjian, XIONG Jian, AN Yanjun ( 116 )

Sequence Stratigraphy and Sedimentary Facies Analysis of Micangshan Stratigraphic Minor-region (West Section) in South Shaanxi, China ..... WU Xinbin, LI Yan, MAO Youliang ( 128 )

Sedimentary Characteristics of Shallow Water Delta in the Lower Member of Sha 2 Formation in W33 Fault Block ..... YIN Nanxin, LUO Chao, WU Bin, DAI Jie, CHEN Cen, LUO Bobo, FAN Renjie, LI Lele ( 135 )

Characteristics of Penecontemporaneous Karstification in Ordovician Majiagou Formation, Sulige Gas Field, Ordos Basin ..... TIAN Qinghua, LIU Jun, LI Fuping, HUANG Dan ( 146 )

Sporopollen Assemblage and Geological Significance of 1 3 538~3 774 m section in Well Chetan 1, Chepaizi Oilfield, Xinjiang ..... ZHANG Yuyang, LI Yongjun, ZHENG Menglin, DUAN Fenghao, XU Qian, GUO Wenjian, YU Haitao, REN Haijiao, WANG Tao ( 157 )

Characteristics and Activity Analysis of Main Active Faults in Tianshui City, North Margin of Western Qinling Mountains ..... WENZhiliang, ZENG Qingming, TIAN Zhongying, LIU Jiang, ZHANG Xinshe, MENG Xiaojie, NIU Qian, SUN Shaozhen ( 166 )

Geological Characteristics, Ore-controlling Factors and Prospecting Criteria of Lateritic Gold Deposits ..... ZHUANG Tianming, LI Xiaofei, WANG Xinyan ( 176 )

Characteristics of Cap Rocks and Metallogenic Condition Analysis of Sandstone-type Uranium in Niuquanhu Area, Santanghu Basin, Xinjiang ..... ZHENG Guodong, LUO Qiang, HUANG Guolong, TANG Xiangfei, WU Jianyong, WEI Changxin ( 185 )

Analysis of Litho-stratigraphic Reservoirs Distribution in High-resolution Sequence Stratigraphic at the Lower Jurassic Sangonghe Formation in Baijiahai Area ..... YU Jingwei, ZHANG Qingwei, QI Liqi, YU Meiqi, ZHANG Xiaotong, PAN Fengchao, CHU Xu ( 199 )

Mineralization of Yangshan Fluorite Deposit in Luanchuan County, Henan Province; Constraints from H-O Isotopes and Element Geochemistry ..... ZHANG Sukun, WANG hui, FENG Shaoping, LIU Yaowen, LI Xiang, CHEN Keying, HUANG Lan, ZHANG Yijing ( 209 )

Study on the Characteristics of Gemology and Mineralogy of “Xi’an Green” Jade ..... ZHAO Huibo, TONG Yanzhuang, LIU Fangxiao, ZHAO Juan, WEI Xiaoyan, LIU San, ZHOU Ningchao ( 217 )

Identify Groundwater Recharge Characteristics and Environmental Implications in Gonghe Basin Using Environmental Isotopes in Gonghe Basin ..... LIU Chunlei, YANG Huifeng, CAO Wengeng ( 227 )

Influence of “Limestone Skylight” on Hydrochemical Composition of Jinan Spring ..... WU Yuxiao, XING Liting, YUAN Chunhong, LÜ Jing ( 237 )

The Susceptibility Evaluation of Loess Landslide Based on Weighted Information Value Method—Taking 1 : 50 000 Map of Majji District of Tianshui City As an Example ..... MENG Xiaojie, ZHANG Xinshe, ZENG Qingming, WANG Dong ( 249 )

Evaluation of Regional Landslide Susceptibility Assessment Based on BP Neural Network ..... ZHANG Linfan, WANG Jiayun, ZHANG Maosheng, CHEN Shebin, WANG Tao ( 260 )

The Concept and Application of Element Equivalent-concentrating: A Case Study for Anomaly Interpretation of Soil Survey from Zhongba Mining Area, Ningqiang County, Shaanxi Province ..... WANG Zhanbin, MA Cheng, YANG Ke, ZHANG Xiaoxing, LIU Ji, KOU Shaolei, TIAN Yuan ( 271 )

Study on the Distribution of Selenium-rich Soil and the Regularity of Selenium Enrichment-Migration in Shitai Area, Anhui, China ..... GAO Ya, HU Chen, ZHANG Chunlei, ZHA Shixin ( 284 )

Characteristics and Influencing Factors of Soil Selenium Content in Fengyan Paddy Field in Hanyin ..... CHEN Jiping, LUO Ting, LI Aorui, WANG Hui, ZHAO Feifei ( 292 )

Research on Spatial Distribution of Artificial Fill in Xi’an Based on Gaussian Mixture Clustering Algorithm ..... LIU Liang, SHI Wei, ZHANG Xiaoping, HAN Bing, DONG Xin, YUAN Lin ( 298 )